

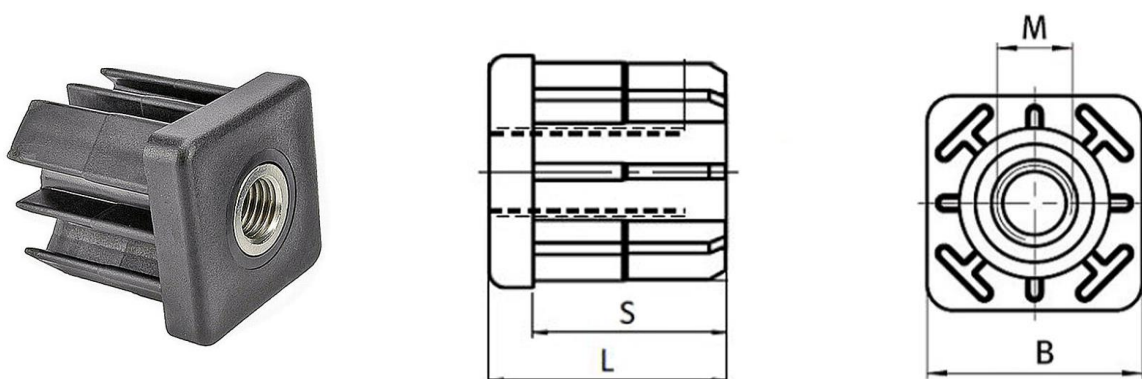
threaded tube inserts  
for  
round and square tubes



## threaded tube inserts

Round and square threaded tube inserts allow for fixing our hinged element feet, vibration dampers, levelling elements and levelling screws to the end of round and square tubes. The inserted thread is made of nickle-coated brass, encapsulated by fiberglass-reinforced polyamide. A tried and tested solution with all kinds of steel frames and other welding constructions. For tube sizes from diameter / square measure 30 mm and tubular wall thickness from 1,5 mm onwards. Packaging unit of 10 pieces each.

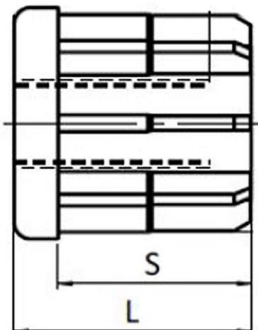
### threaded tube inserts for square tubes



type		B	L	S	tubular wall thickness	thread M	load
description	article number	mm	mm	mm	mm	mm	kg
GEQ30/1,5/M10	1036 0001	30	33	27	1,5	M10	500
GEQ30/1,5/M12	1036 0002	30	33	27	1,5	M12	500
GEQ30/1,5/M14	1036 0003	30	33	27	1,5	M14	500
GEQ30/1,5/M16	1036 0004	30	33	27	1,5	M16	500
GEQ30/2,0/M10	1036 0005	30	33	27	2,0	M10	500
GEQ30/2,0/M12	1036 0006	30	33	27	2,0	M12	500
GEQ30/2,0/M14	1036 0007	30	33	27	2,0	M14	500
GEQ30/2,0/M16	1036 0008	30	33	27	2,0	M16	500
GEQ40/1,5/M10	1036 0009	40	43	35	1,5	M10	600
GEQ40/1,5/M12	1036 0010	40	43	35	1,5	M12	600
GEQ40/1,5/M14	1036 0011	40	43	35	1,5	M14	600
GEQ40/1,5/M16	1036 0012	40	43	35	1,5	M16	600
GEQ40/1,5/M20	1036 0013	40	43	35	1,5	M20	800
GEQ40/2,0/M10	1036 0014	40	43	35	2,0	M10	600
GEQ40/2,0/M12	1036 0015	40	43	35	2,0	M12	600
GEQ40/2,0/M14	1036 0016	40	43	35	2,0	M14	600
GEQ40/2,0/M16	1036 0017	40	43	35	2,0	M16	600
GEQ40/2,0/M20	1036 0018	40	43	35	2,0	M20	800
GEQ40/2,5/M10	1036 0019	40	43	35	2,5	M10	600
GEQ40/2,5/M12	1036 0020	40	43	35	2,5	M12	600
GEQ40/2,5/M14	1036 0021	40	43	35	2,5	M14	600
GEQ40/2,5/M16	1036 0022	40	43	35	2,5	M16	600
GEQ40/2,5/M20	1036 0023	40	43	35	2,5	M20	800
GEQ40/3,0/M10	1036 0024	40	43	35	3	M10	600
GEQ40/3,0/M12	1036 0025	40	43	35	3	M12	600
GEQ40/3,0/M14	1036 0026	40	43	35	3	M14	600

packaging unit of 10 pieces each

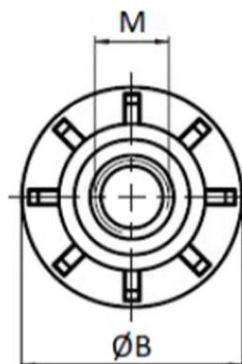
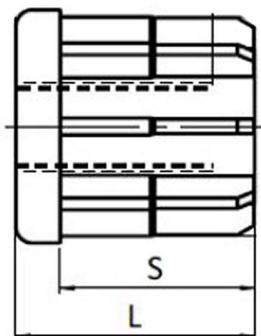
## threaded tube inserts for square tubes



type		B	L	S	tubular wall thickness	thread M	load
description	article number	mm	mm	mm	mm	mm	kg
GEQ40/3,0/M16	1036 0027	40	43	35	3	M16	600
GEQ40/3,0/M20	1036 0028	40	43	35	3	M20	800
GEQ40/4,0/M10	1036 0029	40	43	35	4	M10	600
GEQ40/4,0/M12	1036 0030	40	43	35	4	M12	600
GEQ40/4,0/M14	1036 0031	40	43	35	4	M14	600
GEQ40/4,0/M16	1036 0032	40	43	35	4	M16	600
GEQ40/4,0/M20	1036 0033	40	43	35	4	M20	800
GEQ50/1,5/M12	1036 0034	50	55	44	1,5	M12	600
GEQ50/1,5/M14	1036 0035	50	55	44	1,5	M14	600
GEQ50/1,5/M16	1036 0036	50	55	44	1,5	M16	600
GEQ50/1,5/M20	1036 0037	50	55	44	1,5	M20	800
GEQ50/2,0/M12	1036 0038	50	55	44	2,0	M12	600
GEQ50/2,0/M14	1036 0039	50	55	44	2,0	M14	600
GEQ50/2,0/M16	1036 0040	50	55	44	2,0	M16	600
GEQ50/2,0/M20	1036 0041	50	55	44	2,0	M20	800
GEQ50/2,5/M12	1036 0042	50	55	44	2,5	M12	600
GEQ50/2,5/M14	1036 0043	50	55	44	2,5	M14	600
GEQ50/2,5/M16	1036 0044	50	55	44	2,5	M16	600
GEQ50/2,5/M20	1036 0045	50	55	44	2,5	M20	800
GEQ50/3,0/M12	1036 0046	50	55	44	3,0	M12	600
GEQ50/3,0/M14	1036 0047	50	55	44	3,0	M14	600
GEQ50/3,0/M16	1036 0048	50	55	44	3,0	M16	600
GEQ50/3,0/M20	1036 0049	50	55	44	3,0	M20	800
GEQ50/4,0/M12	1036 0050	50	55	44	4,0	M12	600
GEQ50/4,0/M14	1036 0051	50	55	44	4,0	M14	600
GEQ50/4,0/M16	1036 0052	50	55	44	4,0	M16	600
GEQ50/4,0/M20	1036 0053	50	55	44	4,0	M20	800
GEQ60/2,0/M14	1036 0054	60	55	44	2,0	M14	600
GEQ60/2,0/M16	1036 0055	60	55	44	2,0	M16	600
GEQ60/2,0/M20	1036 0056	60	55	44	2,0	M20	800
GEQ60/3,0/M14	1036 0057	60	55	44	3,0	M14	600
GEQ60/3,0/M16	1036 0058	60	55	44	3,0	M16	600
GEQ60/3,0/M20	1036 0059	60	55	44	3,0	M20	800
GEQ60/4,0/M14	1036 0060	60	55	44	4,0	M14	600
GEQ60/4,0/M16	1036 0061	60	55	44	4,0	M16	600
GEQ60/4,0/M20	1036 0062	60	55	44	4,0	M20	800

packaging unit of 10 pieces each

## threaded tube inserts for round tubes



type		Ø B	L	S	tubular wall thickness	thread M	load
description	article number	mm	mm	mm	mm	mm	kg
GER30/1,5/M10	1035 0001	30	33	27	1,5	M10	500
GER30/1,5/M12	1035 0002	30	33	27	1,5	M12	500
GER30/1,5/M14	1035 0003	30	33	27	1,5	M14	500
GER30/1,5/M16	1035 0004	30	33	27	1,5	M16	500
GER38/1,5/M10	1035 0005	38	43	35	1,5	M10	600
GER38/1,5/M12	1035 0006	38	43	35	1,5	M12	600
GER38/1,5/M14	1035 0007	38	43	35	1,5	M14	600
GER38/1,5/M16	1035 0008	38	43	35	1,5	M16	600
GER42,4/1,5/M10	1035 0009	42,4	43	35	1,5	M10	600
GER42,4/1,5/M12	1035 0010	42,4	43	35	1,5	M12	600
GER42,4/1,5/M14	1035 0011	42,4	43	35	1,5	M14	600
GER42,4/1,5/M16	1035 0012	42,4	43	35	1,5	M16	600
GER42,4/1,5/M20	1035 0013	42,4	43	35	1,5	M20	600
GER48,3/1,5/M12	1035 0014	48,3	55	44	1,5	M12	600
GER48,3/1,5/M14	1035 0015	48,3	55	44	1,5	M14	600
GER48,3/1,5/M16	1035 0016	48,3	55	44	1,5	M16	600
GER48,3/1,5/M20	1035 0017	48,3	55	44	1,5	M20	600
GER50,9/1,5/M12	1035 0018	50,9	55	44	1,5	M12	600
GER50,9/1,5/M14	1035 0019	50,9	55	44	1,5	M14	600
GER50,9/1,5/M16	1035 0020	50,9	55	44	1,5	M16	600
GER50,9/1,5/M20	1035 0021	50,9	55	44	1,5	M20	600

packaging unit of 10 pieces each

Technical modifications subject to change! Any previous versions of this document are herewith null and void!